

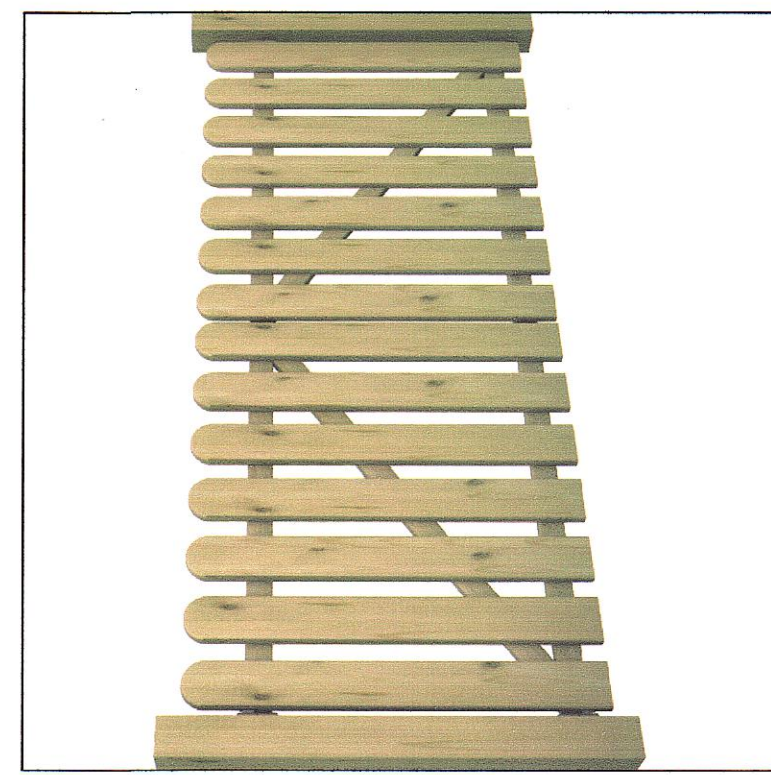
PARAPETTI IN LEGNO



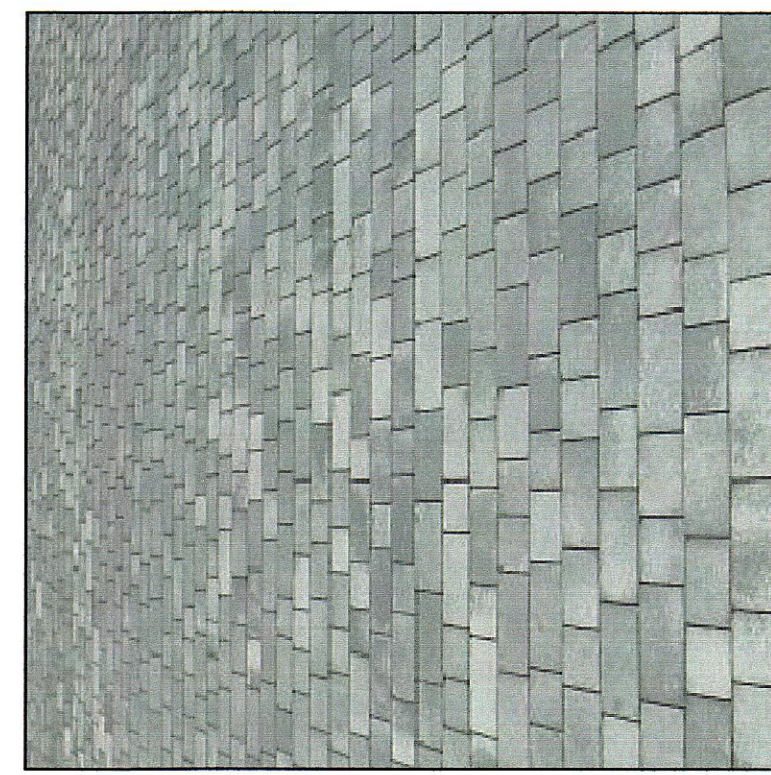
COPERTINE PARAPETTI E GRADINI IN TRAVERTINO



CANCELLI A DUE ANTE IN LEGNO

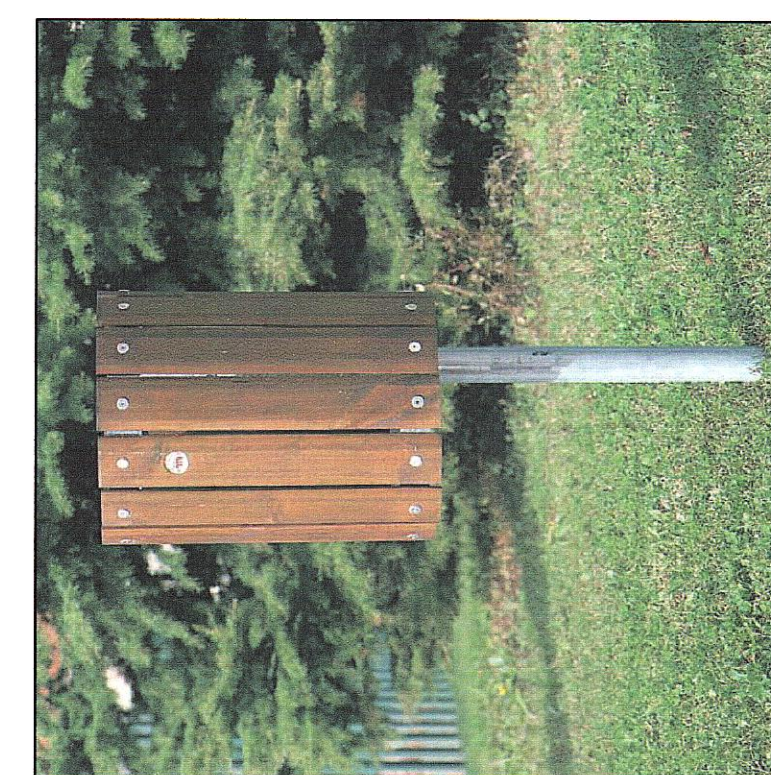
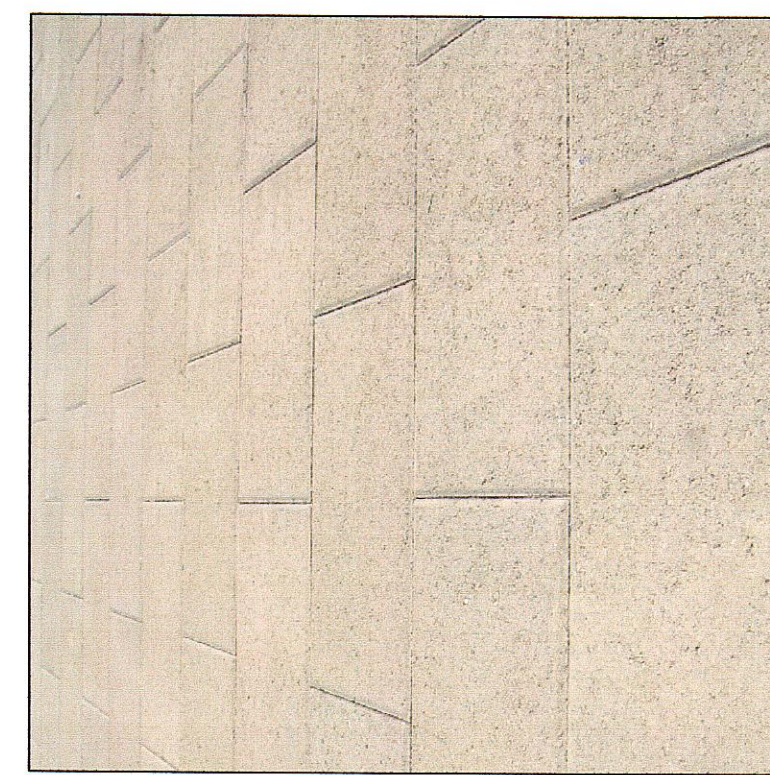


PAVIMENTAZIONE PARCHEGGI IN AUTOBLOCCANTI DRENANTI



PANCHINE CON SEDUTE IN LEGNO

PAVIMENTAZIONE MARCIAPIEDI IN AUTOBLOCCANTI



CESTINI PER RIFIUTI

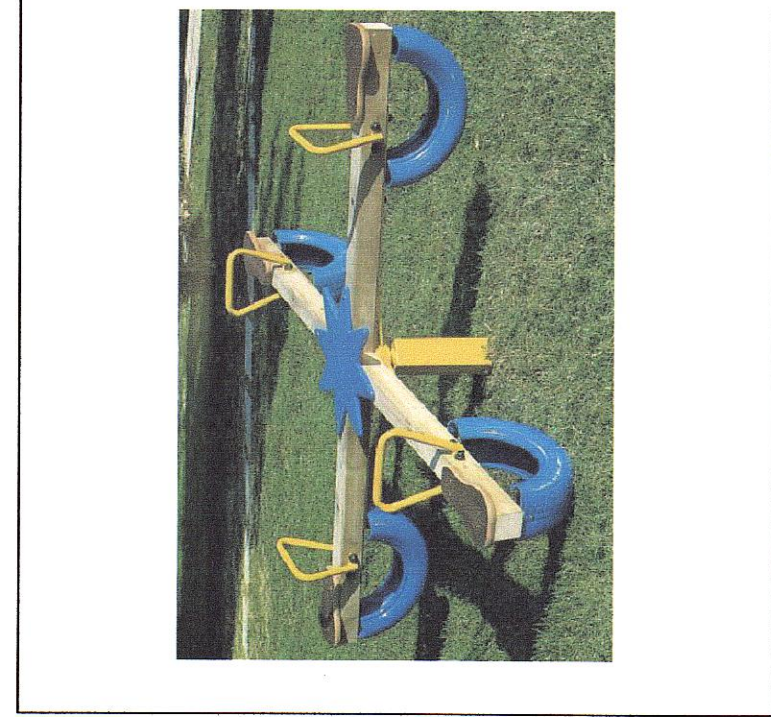


PALI ILLUMINAZIONE DISANO 1573

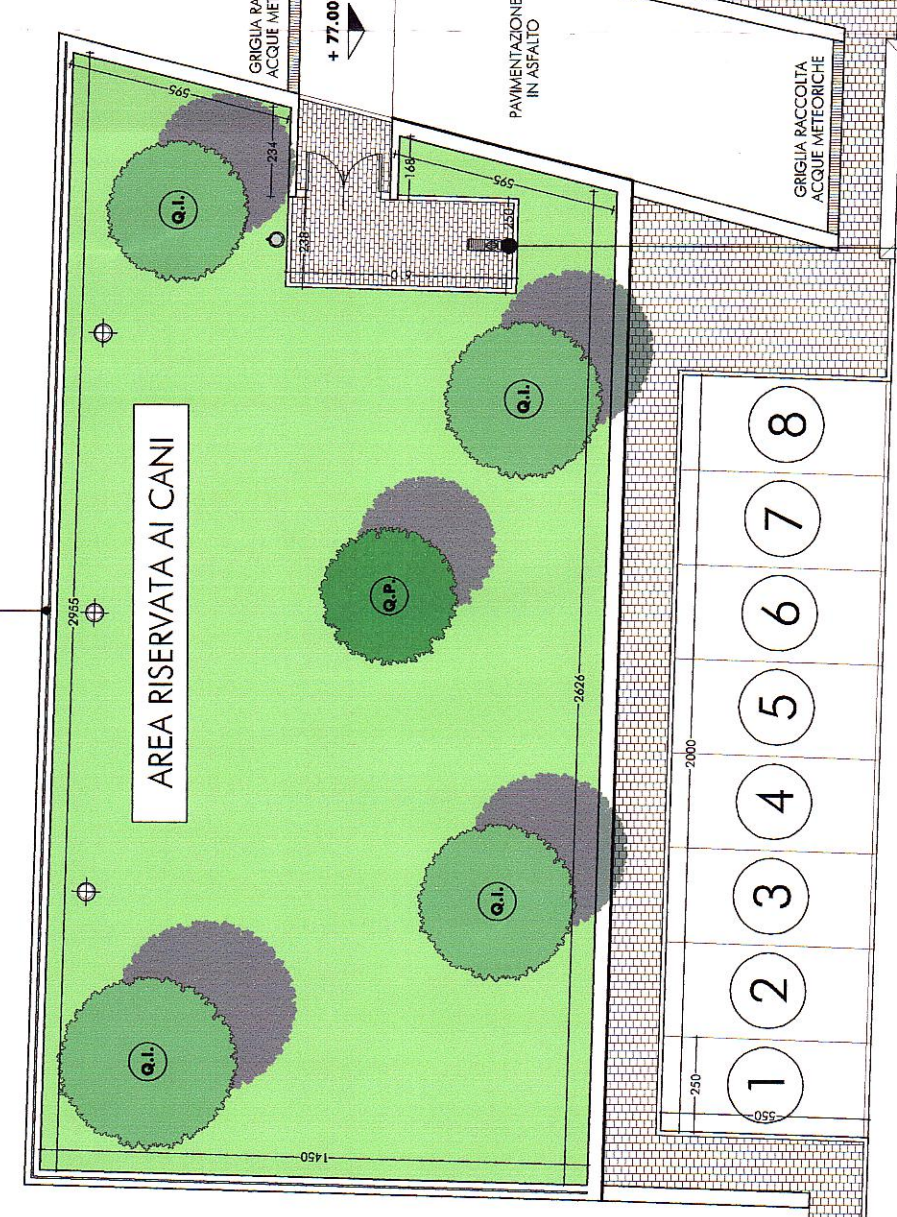
SET DA GIOCO CON CASTELLO E SCIVOLO CON STRUTTURA IN LEGNO



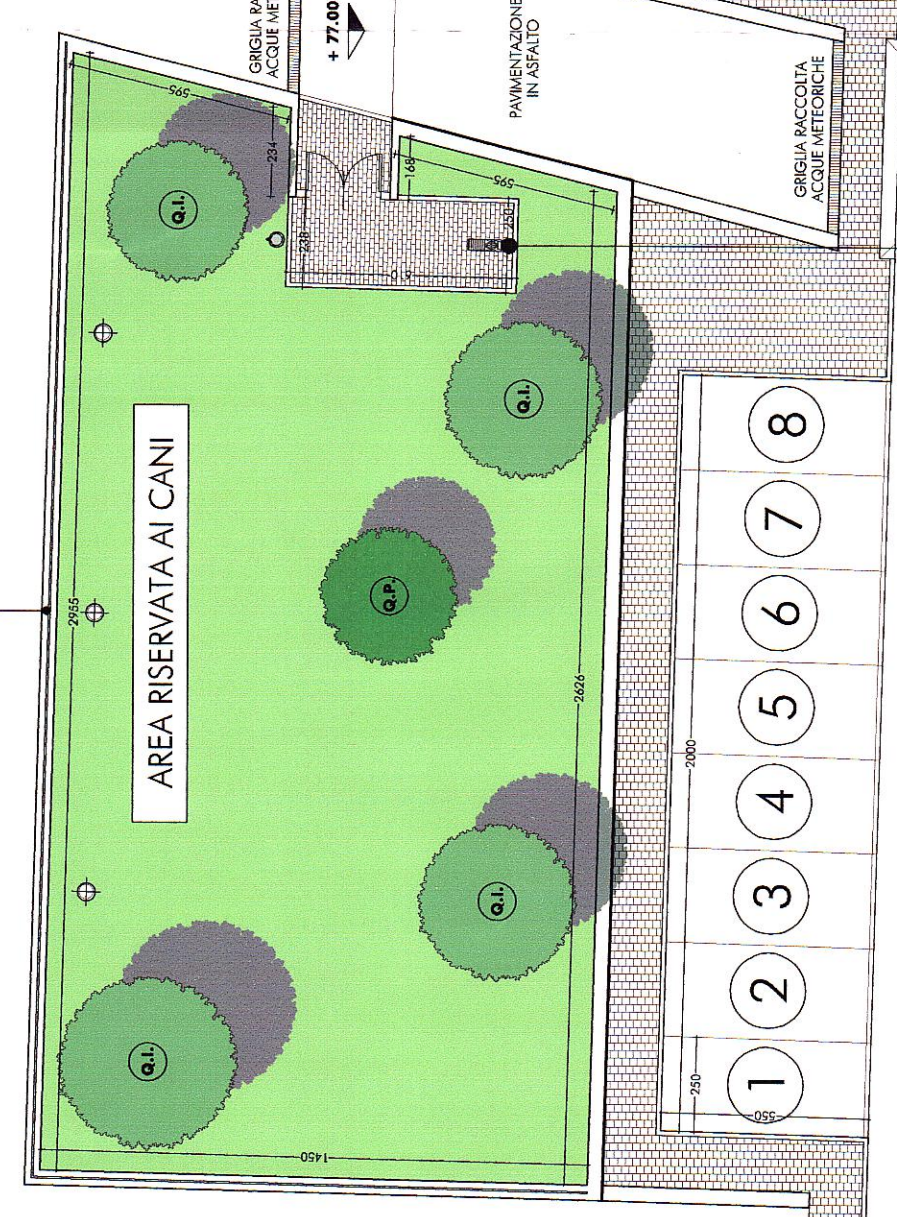
BILICO



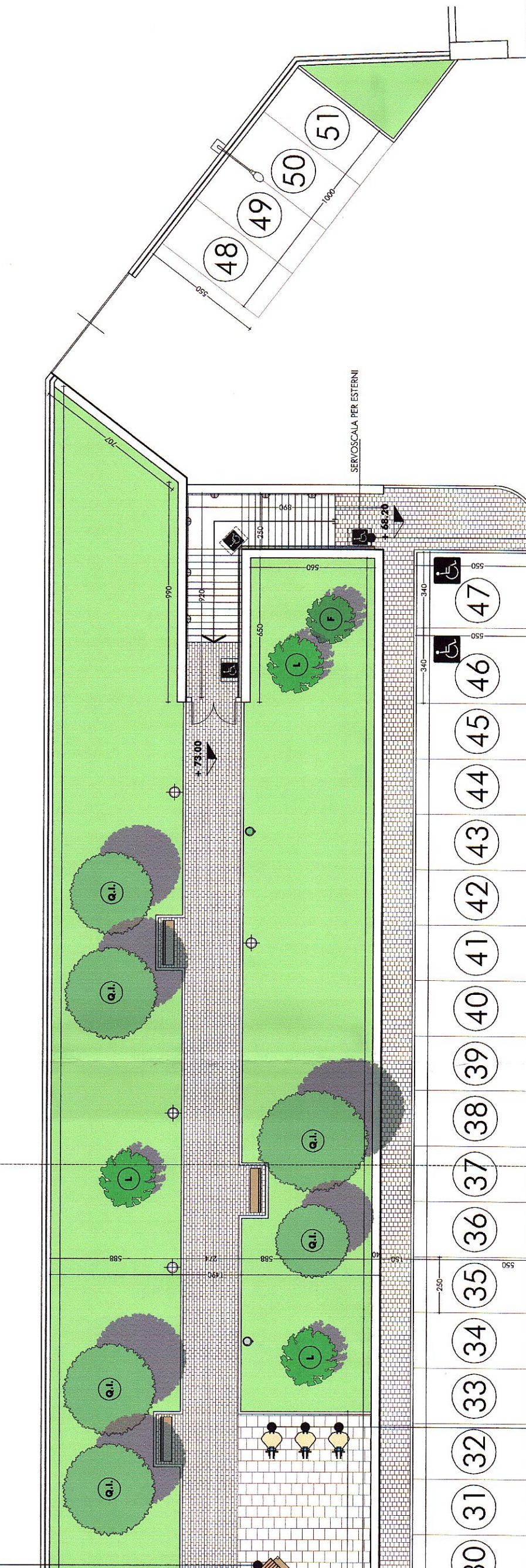
REINFORCING DEL QUADRO E INTERNO A RESEA DI FIBRA DI CARBONIO



REINFORCING DEL QUADRO E INTERNO A RESEA DI FIBRA DI CARBONIO

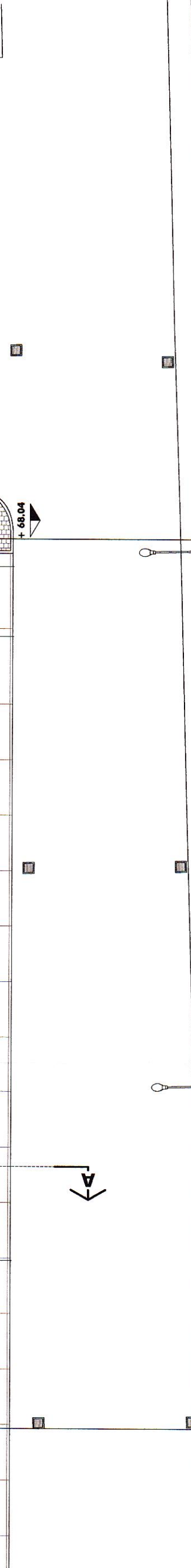


AREA A VERDE ATTREZZATO

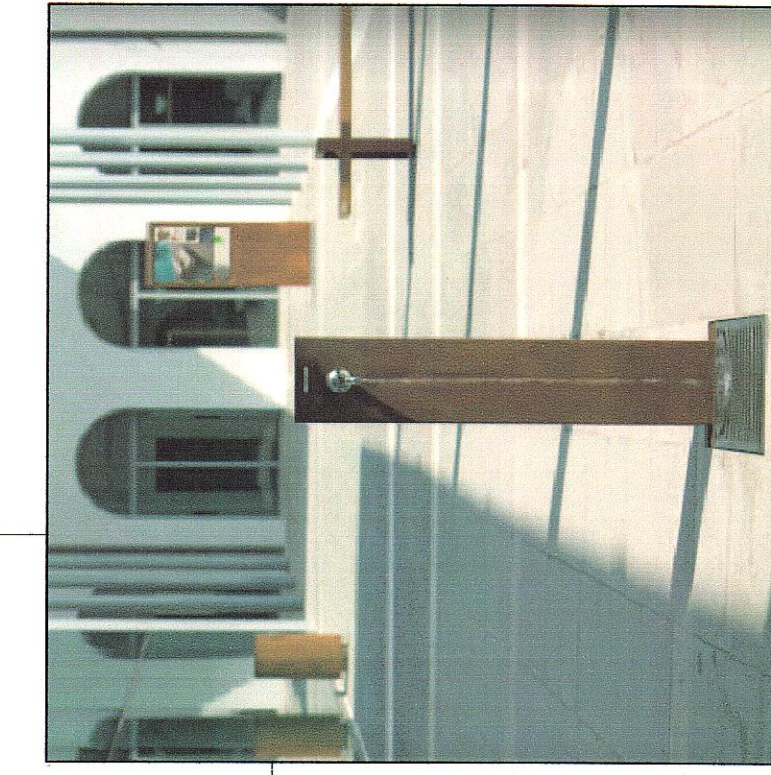


←

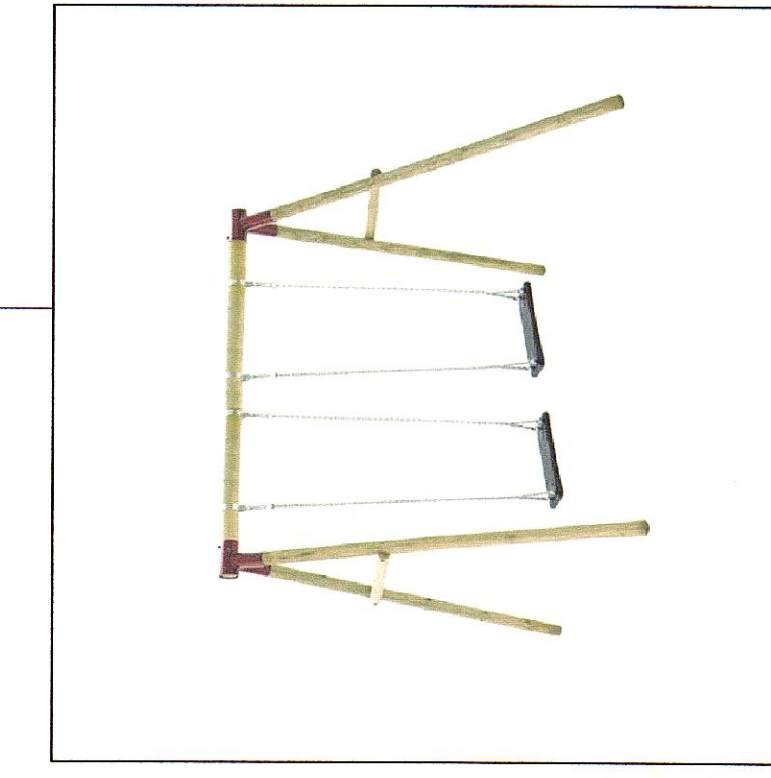
VIA DELLE TERME



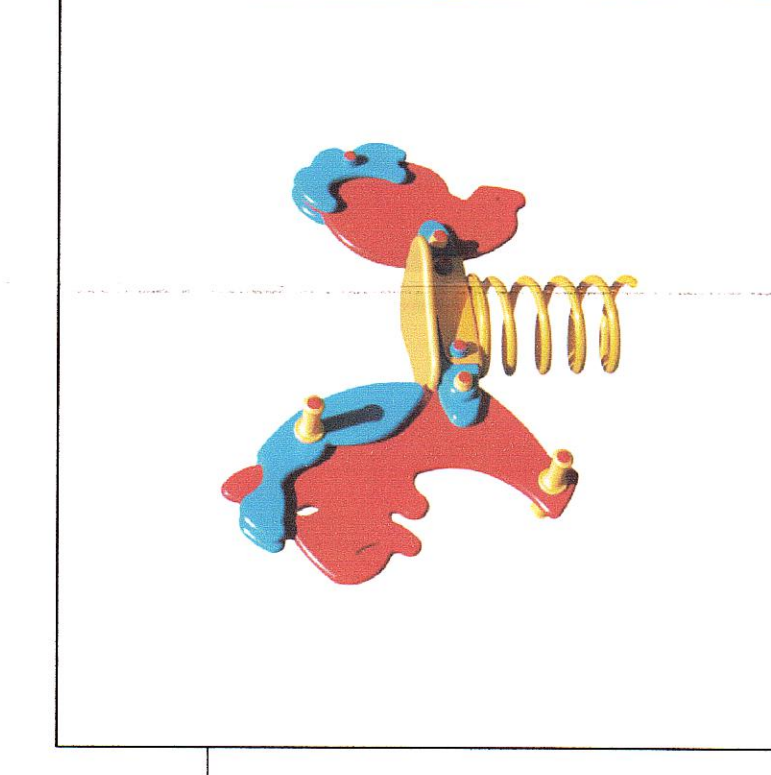
←



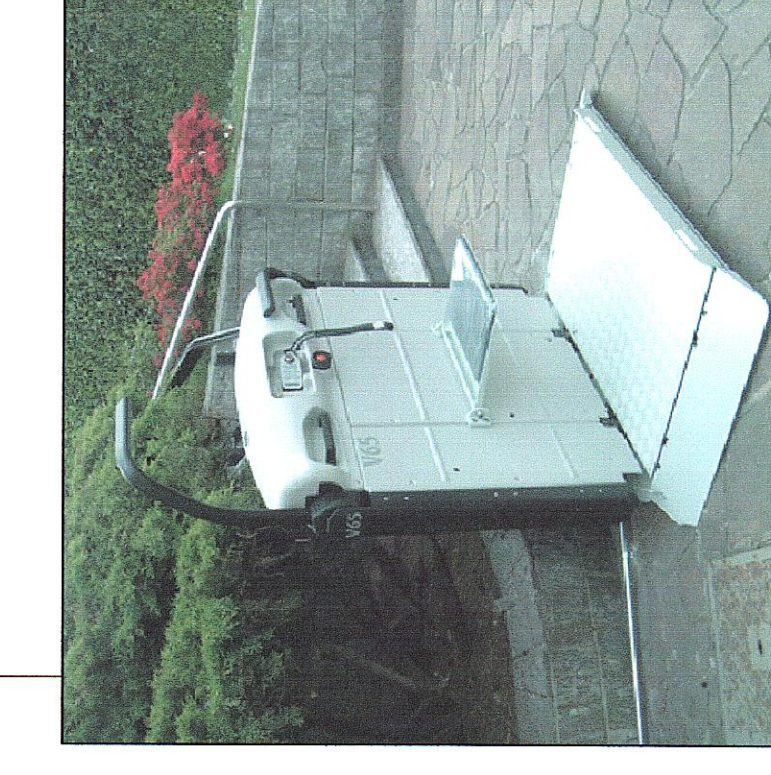
FONTANELLE IN ACCIAIO CON FINITURA CORTEN



ALTALENA CON STRUTTURA IN LEGNO

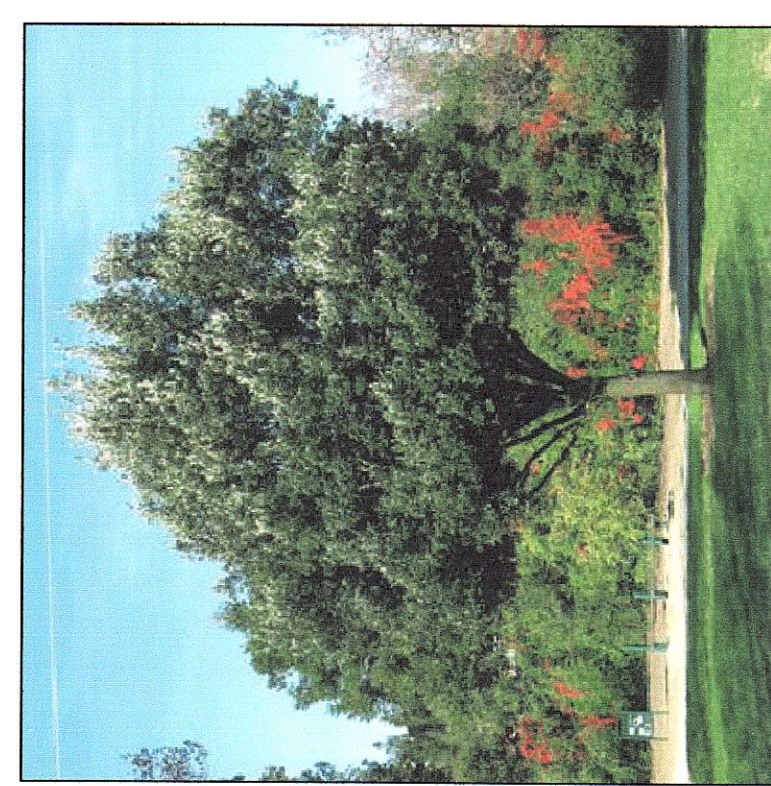


DONDOLO A MOLLA



SERVOSCALA

QUERCUS ILEX



QUERCUS PUBESCENS



FILEA



LENTISCO



LEGENDA

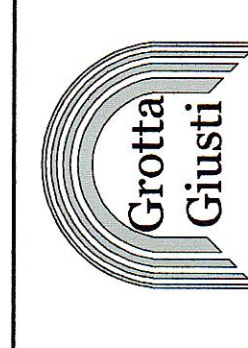
- QUERCUS PUBESCENS
- QUERCUS ILEX
- LENTISCO
- FILEA

STUDIO TECNICO FERRARIO
 ARCHITETTURA - INGEGNERIA - INTERIOR - DESIGN
 VIA MORAZZONE 11 - COMO - TEL. 031.267254 - FAX 031.261844 - EMAIL: INFO@STUDIOTECHNICOFERRARIO.IT

COMUNE DI MONSUMMANO TERME (PT)
 P.O.C. N. 0022338 E 23/11/2016
 C.I.P. 6.2



PIANO ATTUATIVO AI SENSI DELLA LEGGE REGIONALE 65/2014 COMUNE DI MONSUMMANO TERME (PT) VIA GROTTA GIUSTI, 1411



PROGETTISTA
STUDIO TECNICO FERRARIO
 OPERE DI URBANIZZAZIONE
 PLANIMETRIA

COMITENTE
CASTELLO SGR S.P.A. FONDO CÒSIMO I

DATA
OTT 2016
 SCALA
1:200
 FASCIA
14
 REGISTRAZIONE
18.11.2016