



[Signature]

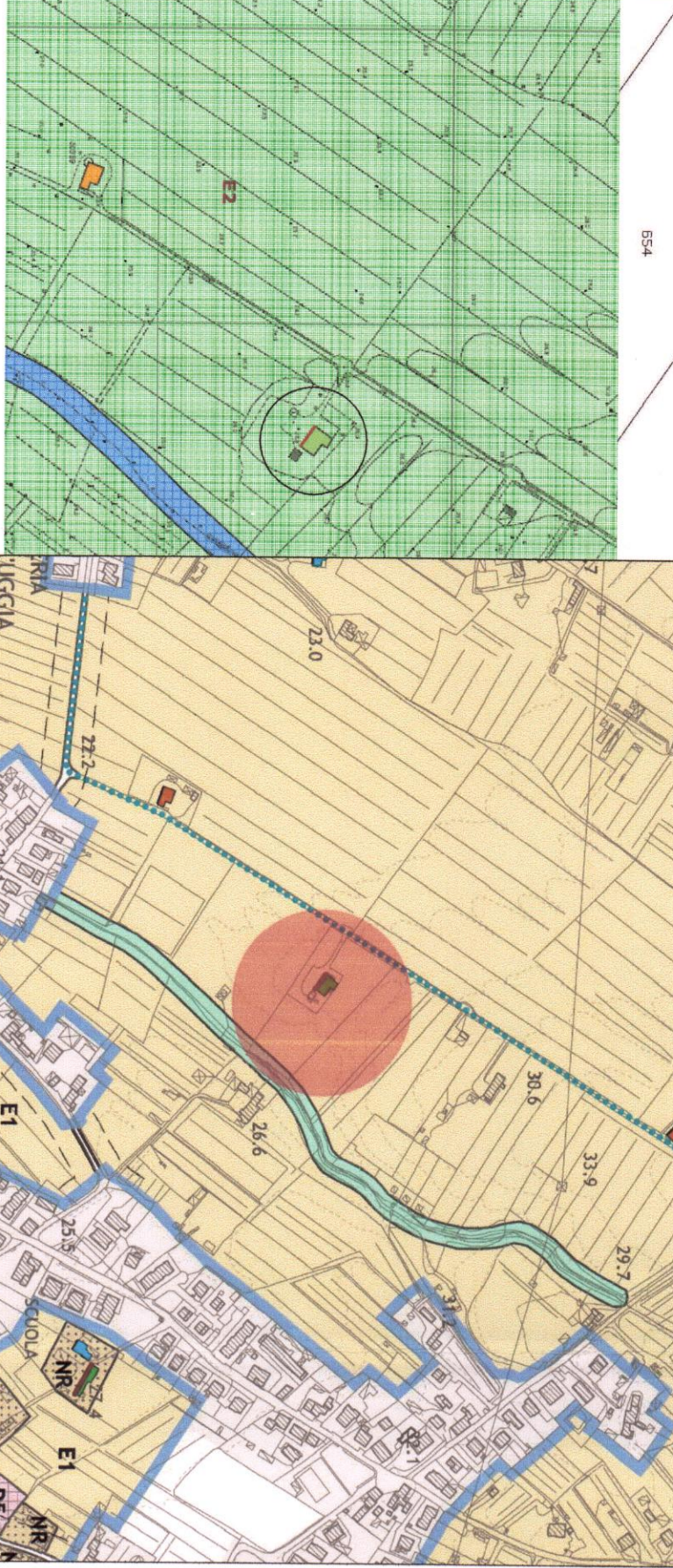
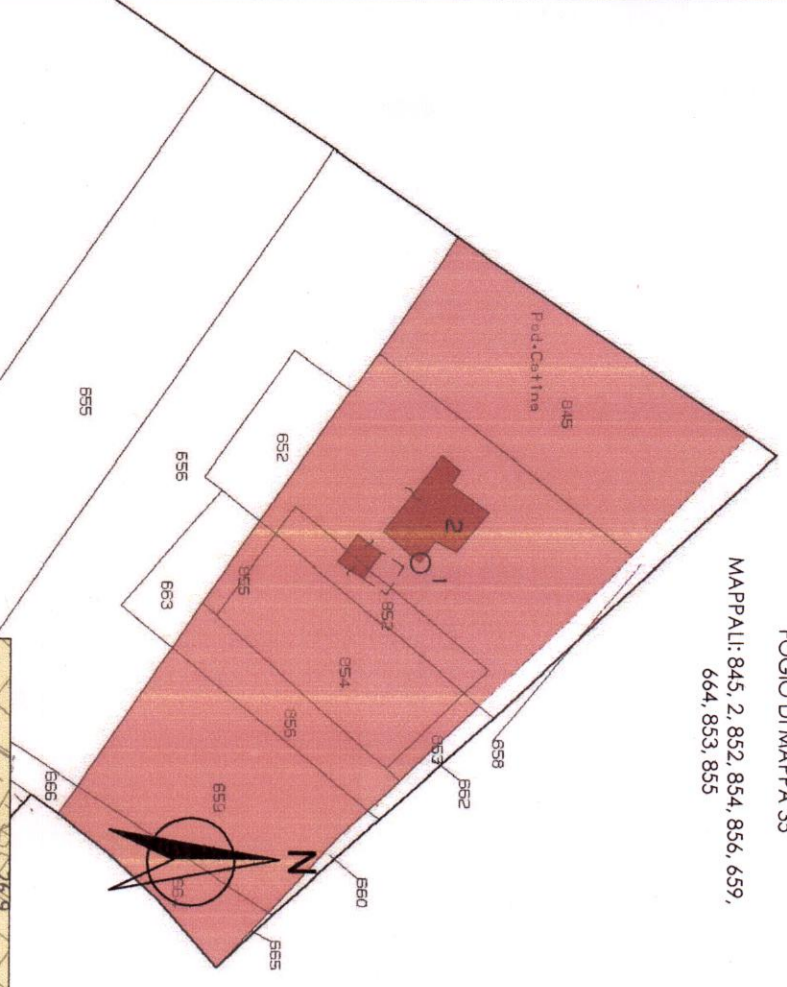
STABILTO CASASALE

COMUNE DI MONSUMMANO TERME

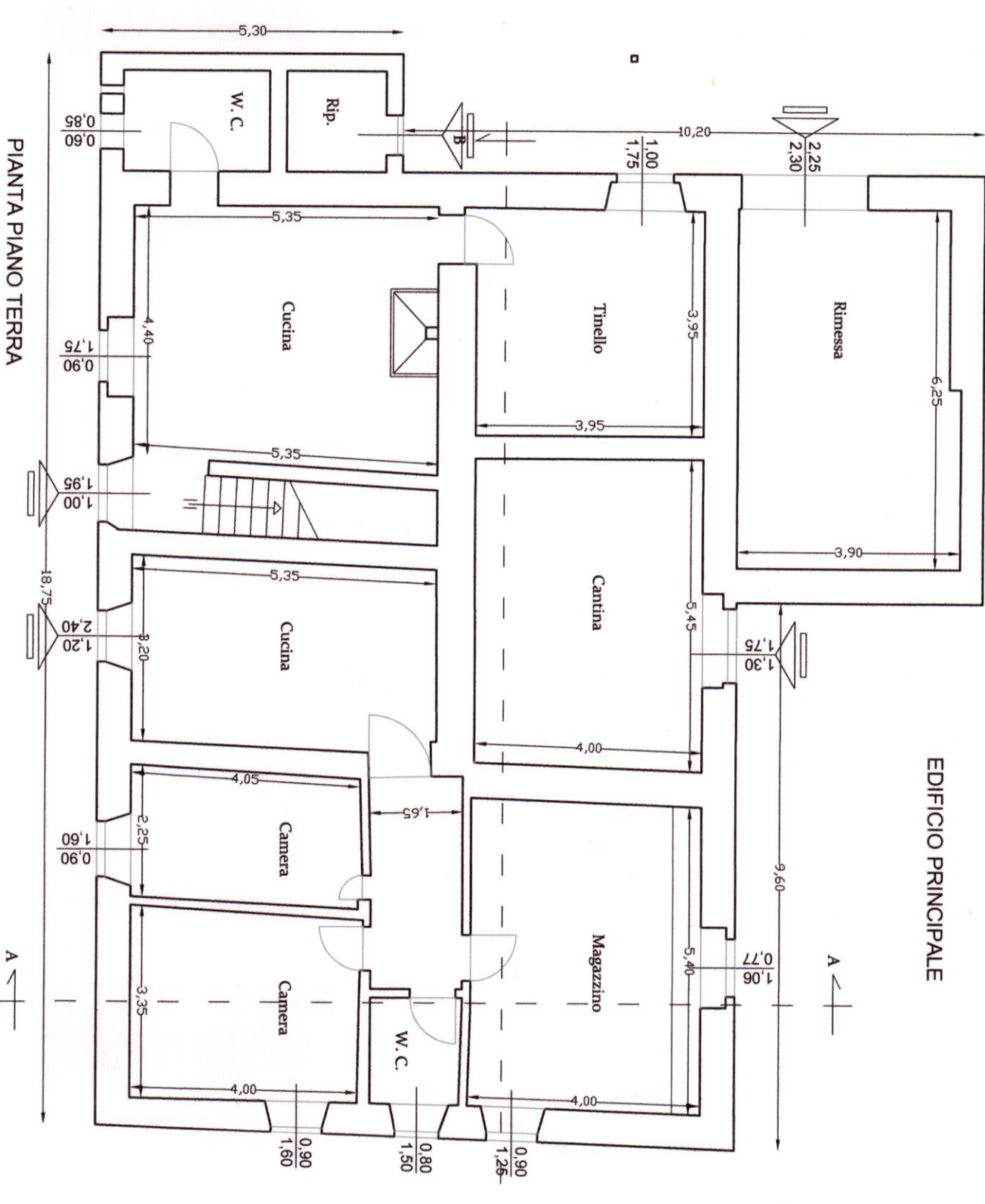
FOGGIO DI MAPPA 35

MAPPALI: 845, 2, 852, 854, 856, 459,

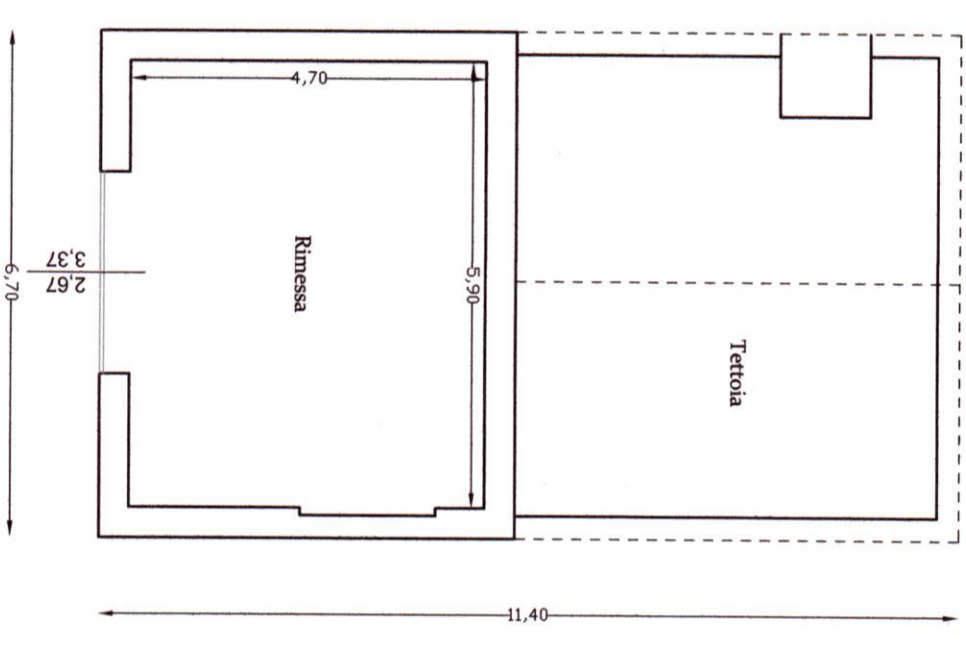
864, 853, 855



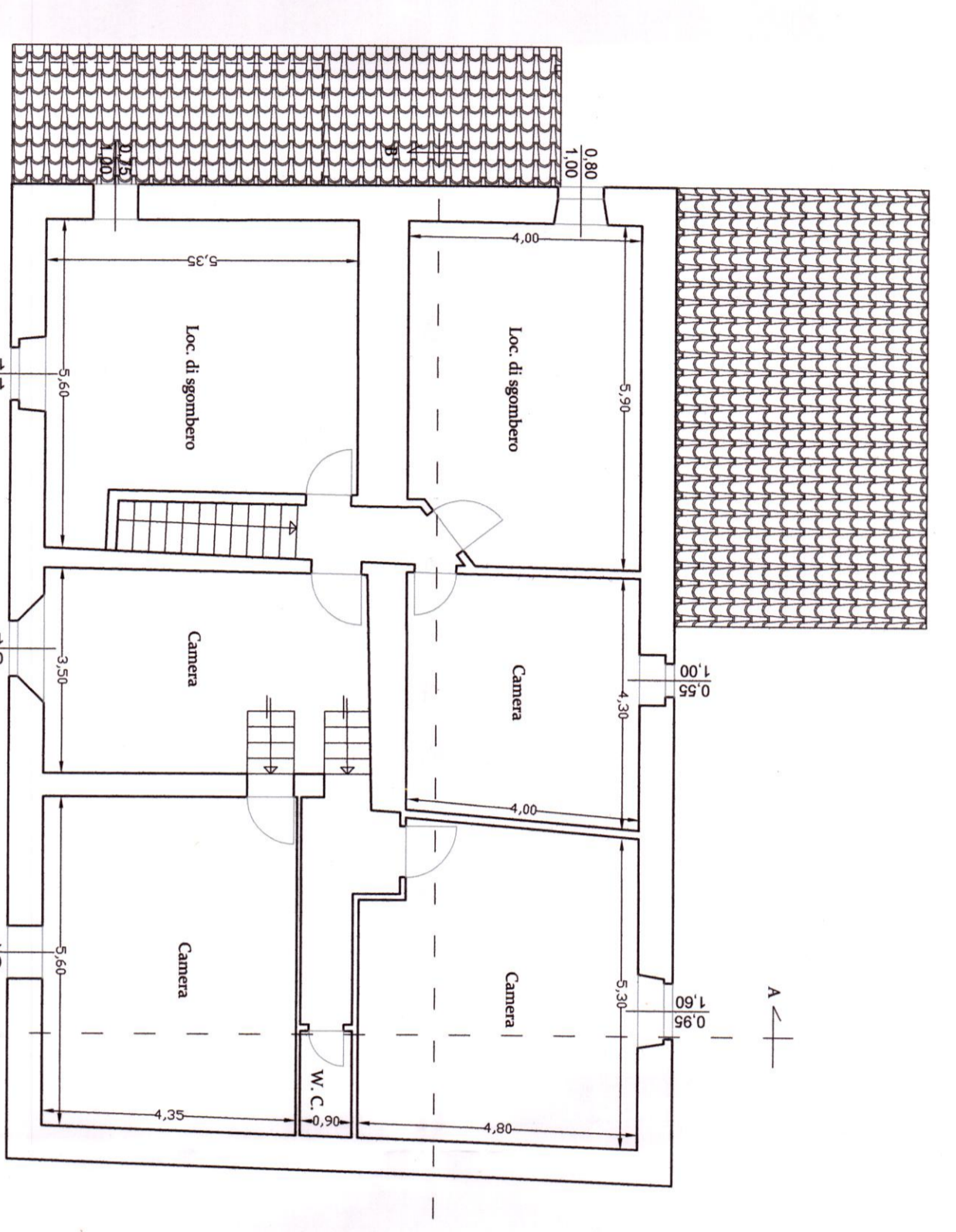
ESTRATTO DEL R.U.I. ZONA 12
ESTRATTO DEL R.U.I. ADOTTATO ZONA 12
COMUNE DI MONSUMMANO TERME



EDIFICIO PRINCIPALE

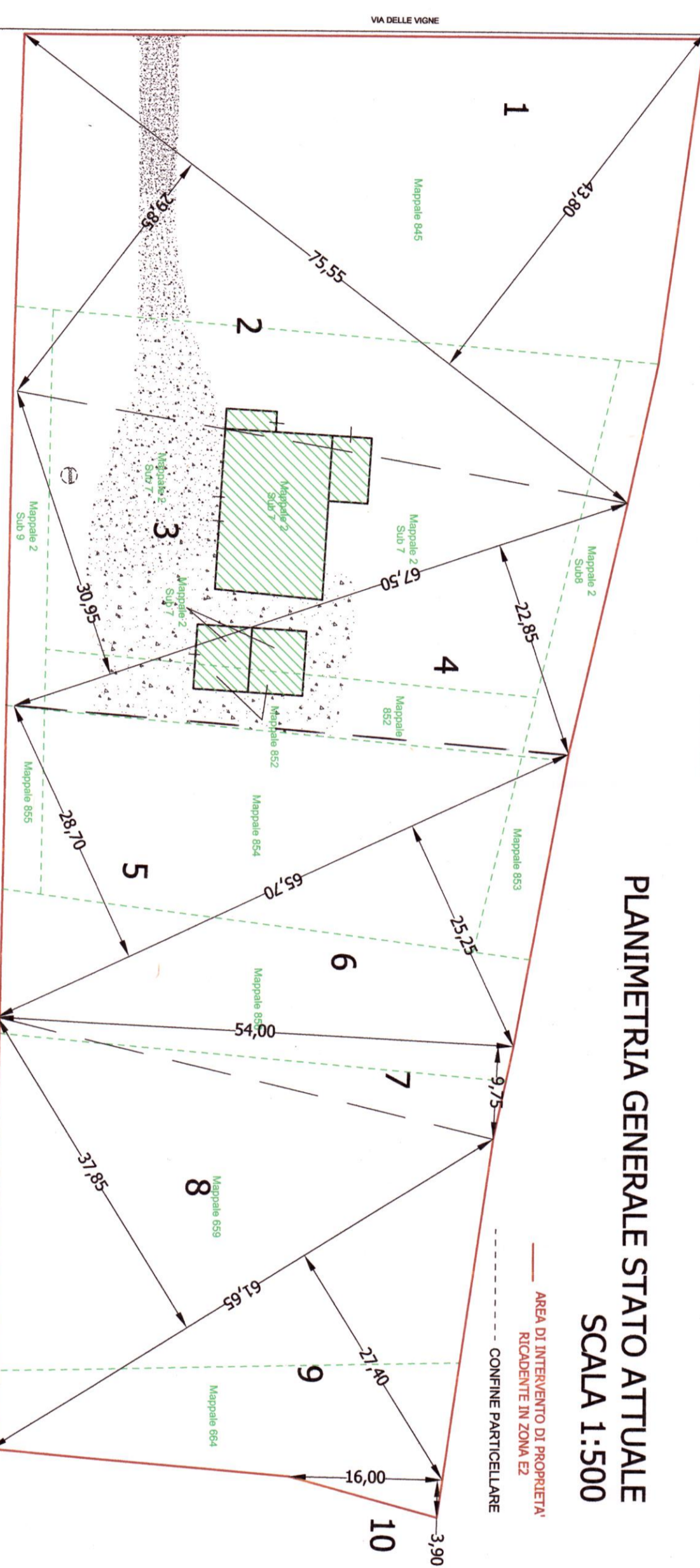


EDIFICIO SECONDARIO

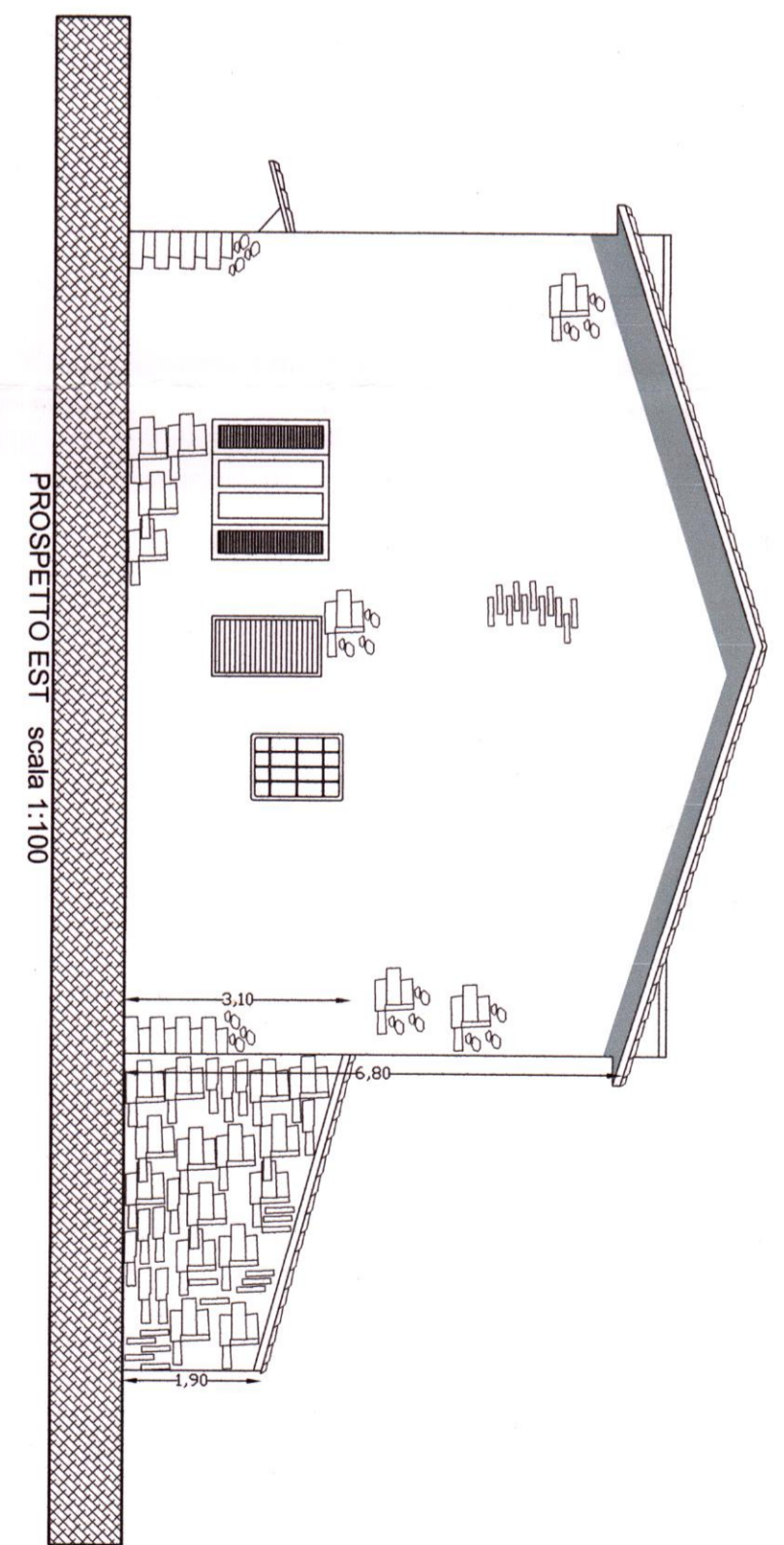


PIANTA PIANO PRIMO

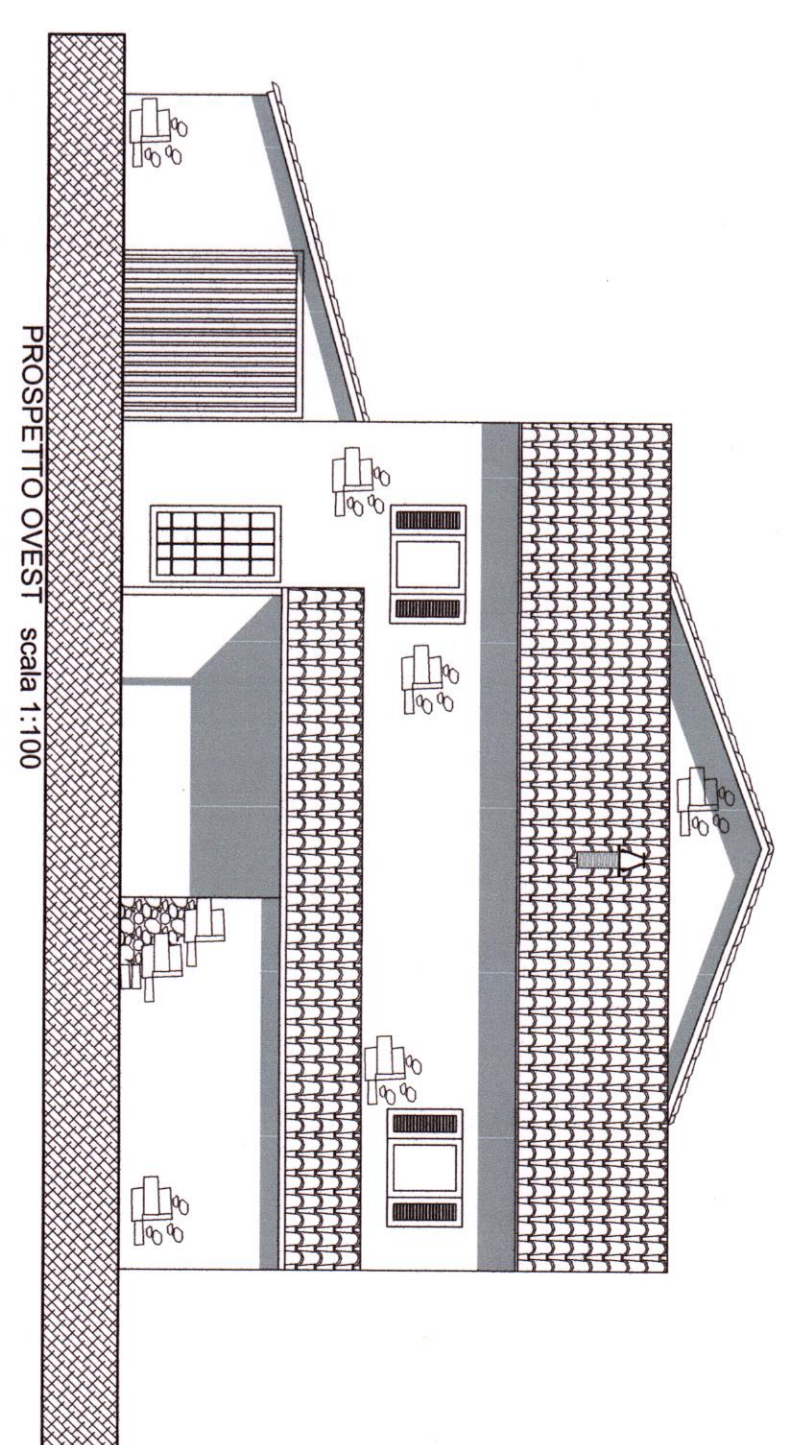
CALCOLO SUPERFICIE CONSUNTA						
1	43,80	x	75,55	=	1654,45	mq
2	43,80	x	75,55	=	1127,88	mq
3	43,80	x	75,55	=	1127,88	mq
4	67,80	x	22,85	=	1548,60	mq
5	67,80	x	28,70	=	542,80	mq
6	67,80	x	28,70	=	542,80	mq
7	67,80	x	28,70	=	542,80	mq
8	67,80	x	28,70	=	542,80	mq
9	67,80	x	28,70	=	542,80	mq
10	67,80	x	28,70	=	542,80	mq
TOTALE				=	8675,92	mq



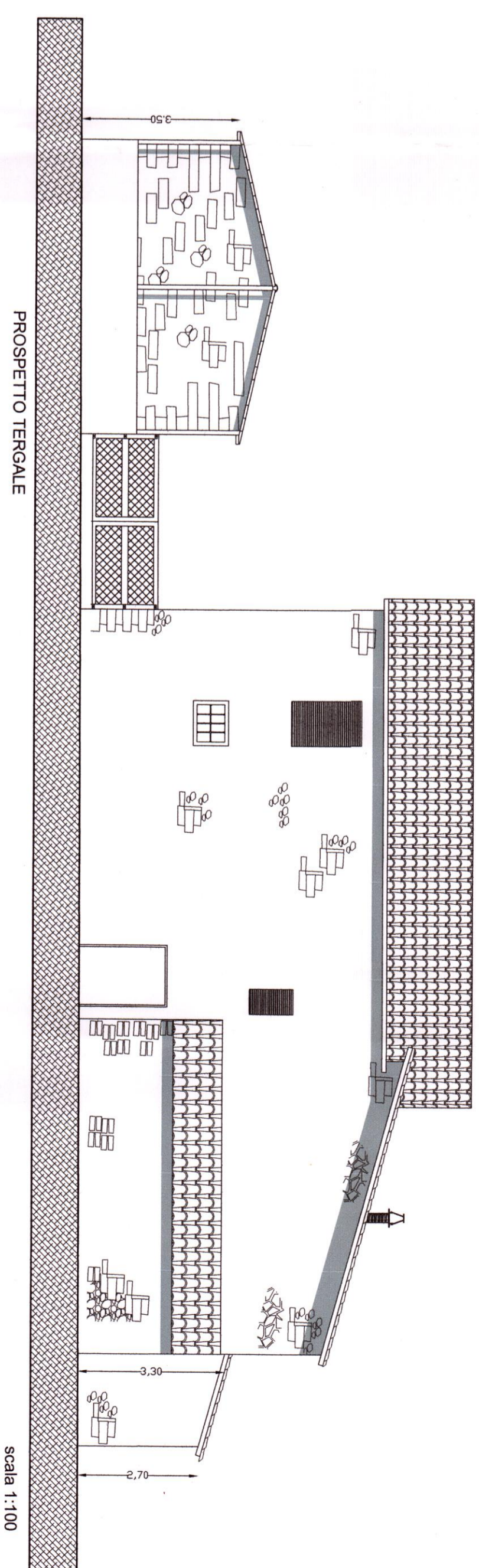
PLANIMETRIA GENERALE STATO ATTUALE
SCALA 1:500



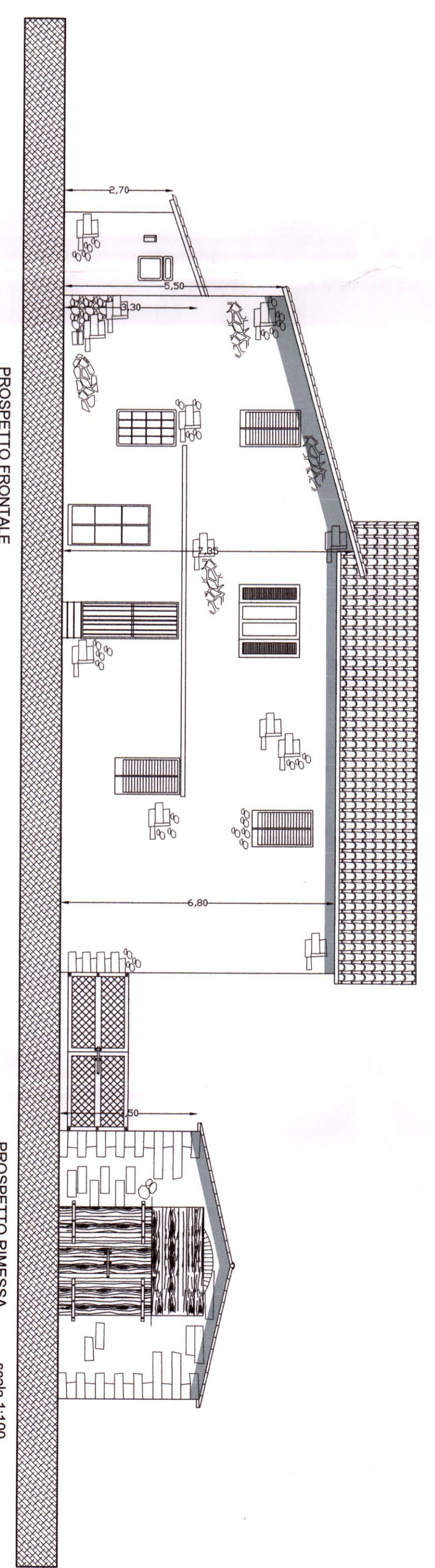
PROSPETTO EST scala 1:100



PROSPETTO OVEST scala 1:100

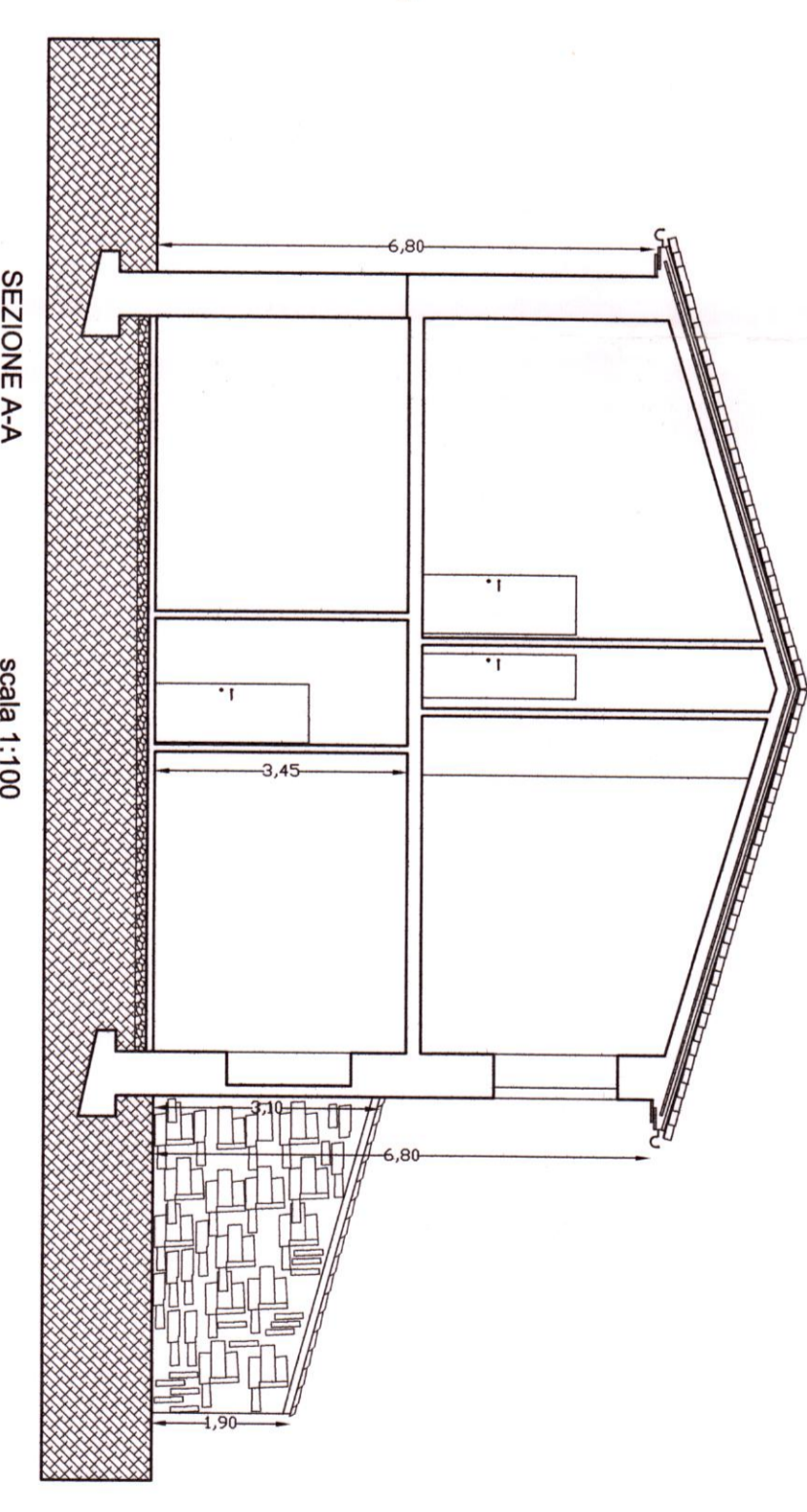


PROSPETTO TERGALE
scala 1:100

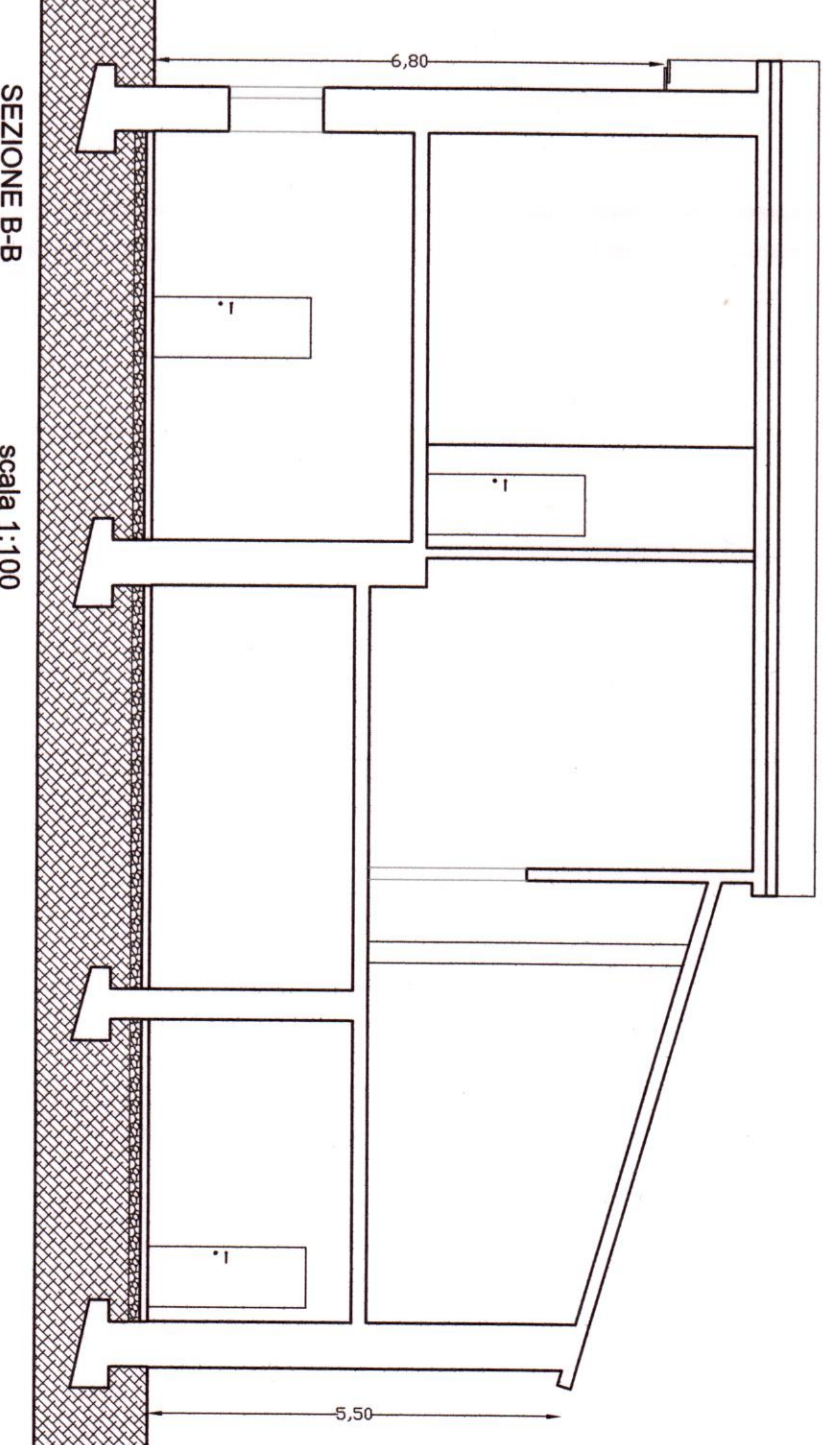


PROSPETTO FRONTALE

PROSPETTO RIMESSA
scala 1:100



SEZIONE A-A
scala 1:100



SEZIONE B-B
scala 1:100